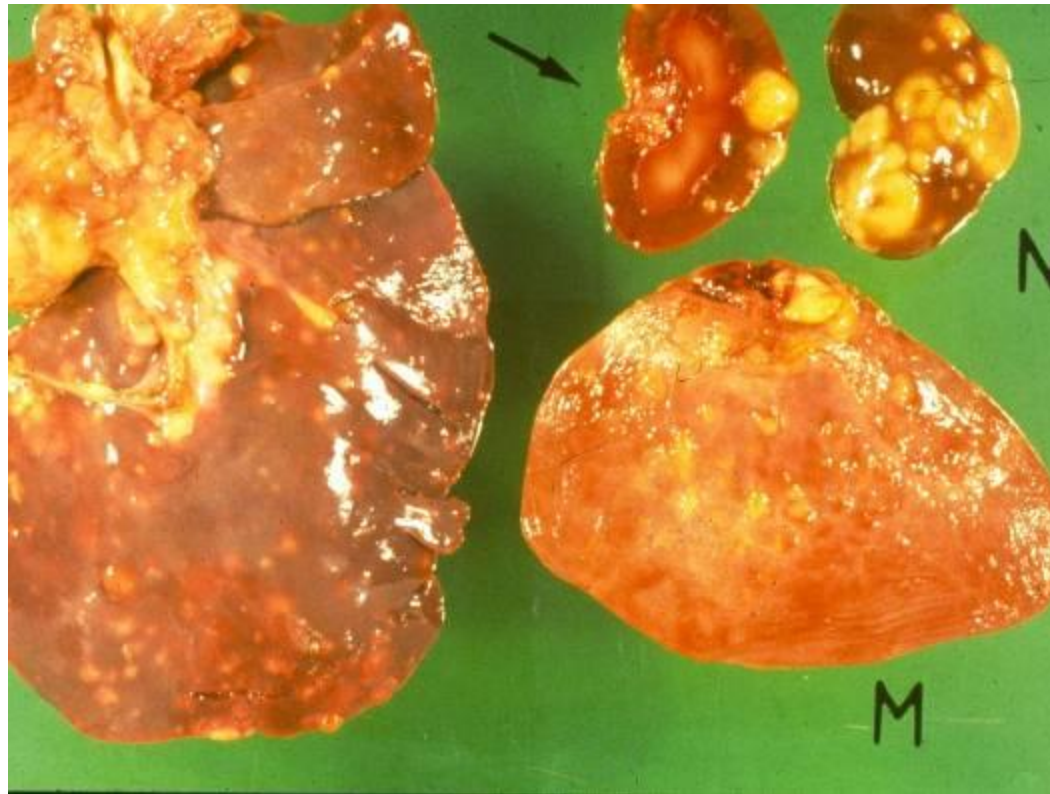


Abnormal behaviors and impaired general conditions reported by the hunter:

### Abnormal characteristics



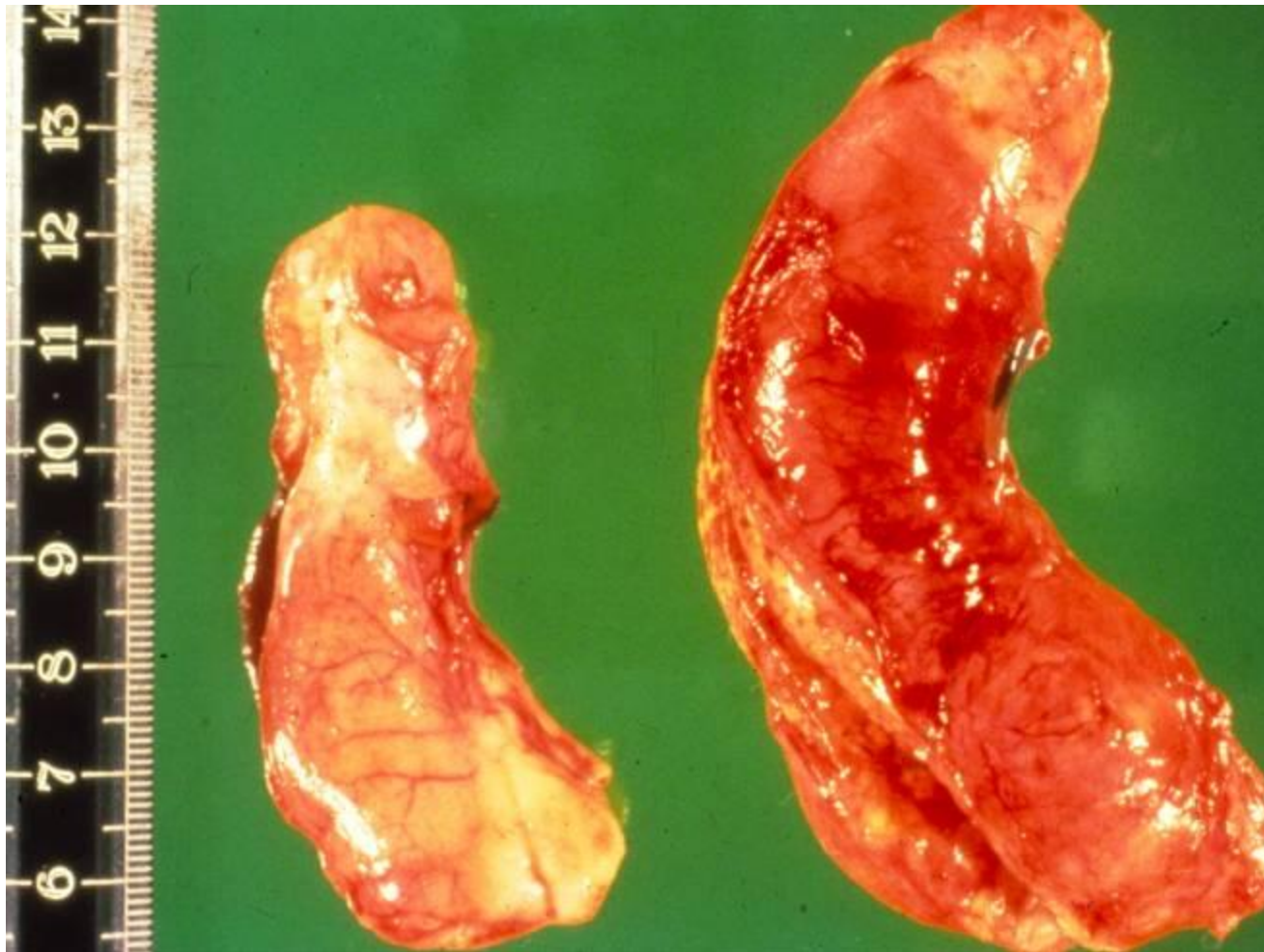
**\* Disturbing image warning: This section includes photos of diseased game.**



Generalized tumors or abscesses when found in different inner organs or muscles.



Arthritis



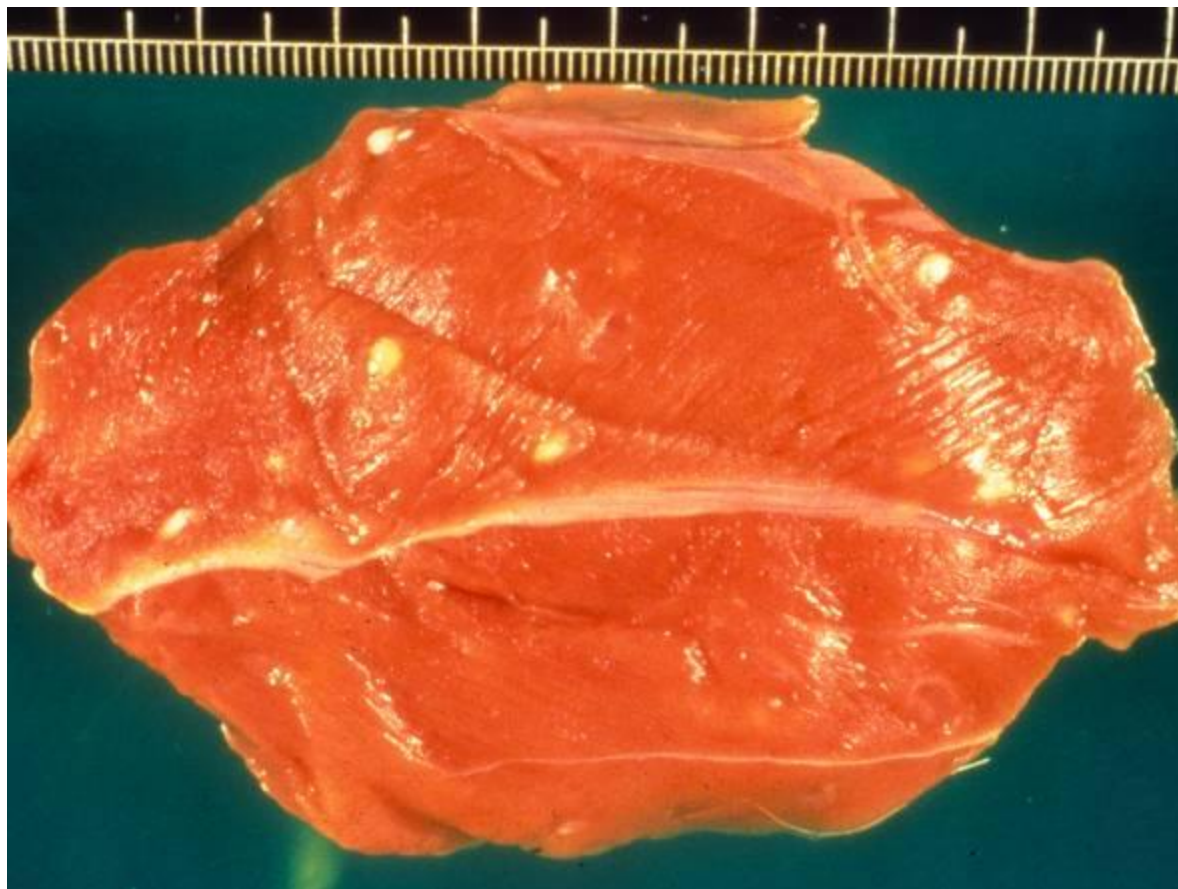
Orchitis



Pathological liver changes



Pathological spleen changes



Parasite infestation



Excessive gas formation  
in gastric and intestinal  
tract with coloring of  
inner organs



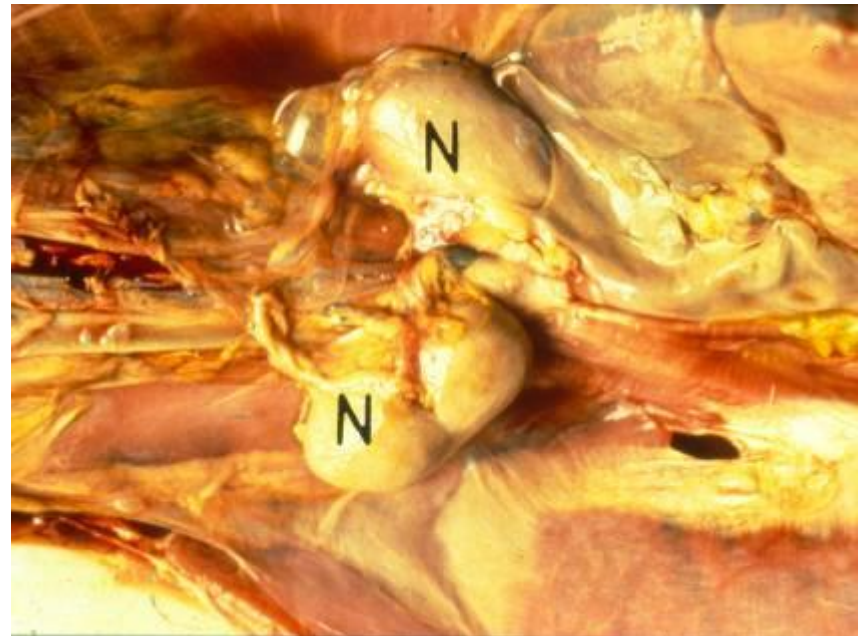


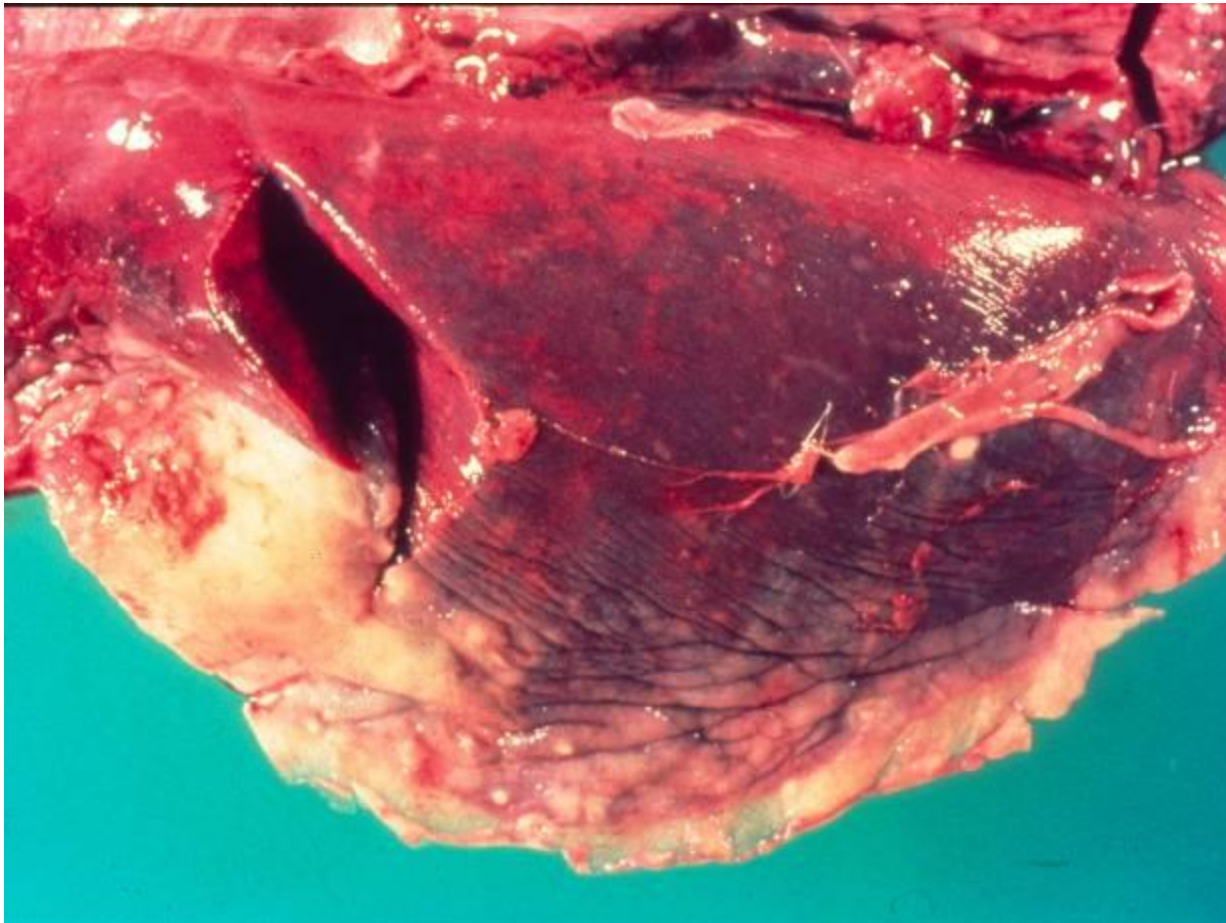


Old, open bone fractures



Emaciation  
(cachexia) and/or  
generalized or  
localized edemae





Fresh adhesions or synechiae with pleura or peritoneum